

Spring Holiday Care 2025

Week 1: 29th September - 3rd October

Open 7:15am until 6:15pm

Full fees as per program

(remember, your out of pocket costs are heavily reduced by Childcare Subsidy entitlement)

IMPORTANT INFORMATION

Children are required to bring a fruit snack, recess, nutritious lunch and a drink bottle when attending Holiday Care.

Comfortable closed in shoes are to be worn and children dressed in sunsmart clothing.

Excursion days - all children must arrive no later than 45 minutes prior to advertised departure.

DAYTONAS
all week



Monday 29th September - IN HOUSE - 68.35

SPACE DAY

Design your
own planet!



Rocket Launch
How far will your rocket go?

Paper mache
group activity



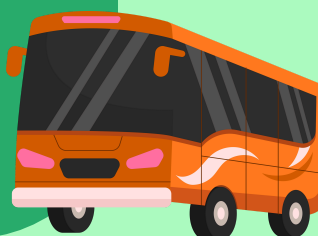
Tuesday 30th September- EXCURSION - \$100.35

ADELAIDE ZOO

Come with us to see all the
animals at Adelaide Zoo.

Arrive back at 3:15pm

Children
must arrive
no later than
8:15 am



Zoo Scavenger Hunt

Animal sensory play
and habitat making

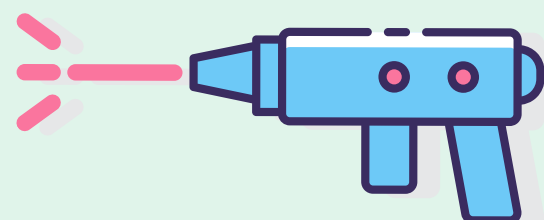


Wednesday 1st October - SPECIAL VISITOR - \$91.35

LASER TAG (STRIKEFORCE)

9:30am to 2:30pm

Group games and
challenges!



Laser tag in the gym!
(back by popular demand!)

SPY activities



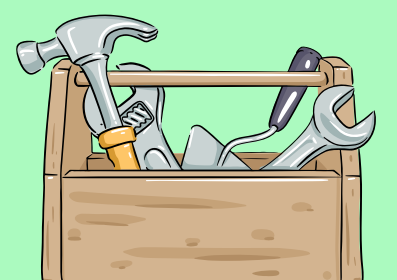
Thursday 2nd October - IN HOUSE - \$68.35

DECONSTRUCTION & WHEELS DAY

Bring in your wheels of
choice (bike, scooter etc)
and helmet!



Using workshop tools,
deconstruct donated
electronics & then
reconstruct your own
creations!



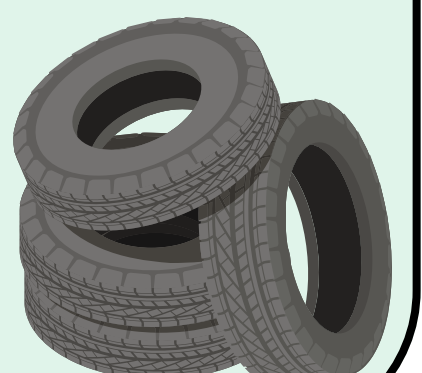
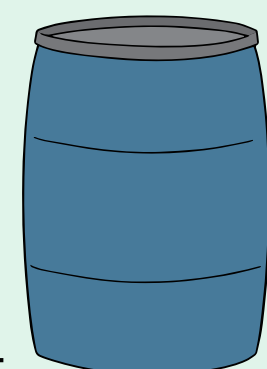
Friday 3rd October SPECIAL VISITOR- \$77.50

GLENN'S MOBILE JUNKYARD

10am - 3pm

Full day of nature play
activities in the Gully!

Get messy with Glenn's Junkyard! Wear
enclosed shoes and clothes ready to get
dirty! Children need to bring a spare pair
of clothes, shoes, socks.



Spring Holiday Care 2025

Week 2: 6th - 10th October

Open 7:15am until 6:15pm
Full fees as per program
(remember, your out of pocket costs are heavily reduced by Childcare Subsidy entitlement)

IMPORTANT INFORMATION
Children are required to bring a fruit snack, recess, nutritious lunch and a drink bottle when attending Holiday Care.

Comfortable closed in shoes are to be worn and children dressed in sunsmart clothing.

Excursion days - all children must arrive no later than 45 minutes prior to advertised departure.



Monday 6th October

PUBLIC HOLIDAY

Tuesday 7th October - IN HOUSE - \$68.35

OSHC JURASSIC ESCAPE ROOM

JURASSIC PARK THEMED ESCAPE ROOM

Test your palaeontology skills and discover some dinosaur fossils

Fizzy dinosaur egg bathbombs (hatching)



Wednesday 8th October - SPECIAL VISITOR - \$86.50

ROCK ABOUT CLIMBING WALL

9:30am - 12pm

TRY CLIMBING AN 8 METRE TALL CLIMBING WALL ON THE OVAL!



Picnic Lunch on the oval

Organised games and challenges throughout the day



Thursday 9th October- EXCURSION - \$94

ROLLER SKATING -

Join us for rollerskating at Blackwood Recreation Centre!
Return to school at 12:30 pm



Children must arrive no later than 8:40am



Wear your disco clothes today



Karaoke Party in the afternoon

Friday 10th October - IN HOUSE - \$68.35

MINDFULNESS DAY

Zen Garden
Bubbles Galore



Group Mindful Activities during the day

Breathing Bracelets



THINGS YOU NEED TO KNOW!

It is important that you read all the information **BEFORE** SUBMITTING YOUR FORM.

Bookings are NOW OPEN. Bookings CLOSE at 6:00pm Friday, 19th September

(only children who are currently enrolled at FHPS are able to attend)

Booking form can be handed to an OSHC educator or emailed to flagstaff.oshc49@schools.sa.edu.au

Emailed booking forms are to be attached as a separate document.

We will not accept photo images within email contents.

ALL WEEKLY OSHC FEE PAYMENTS MUST BE UP-TO-DATE BEFORE HOLIDAY CARE BOOKINGS WILL BE ACCEPTED

All confirmed bookings will appear on the parent app and ARE FINAL - all cancellations of bookings will be charged and recorded as absent **REGARDLESS OF REASON FOR CANCELLATION.** Swapping of days is not permitted.

Contact Details Telephone: 8270 1744 Email: flagstaff.oshc49@schools.sa.edu.au

Open Times Drop off from 7:15am and pick up by 6:15pm. A late pick-up fee of \$10.00 for every 5-minute block will apply from 6:15pm

Fee Structure Daily fees advised on program **(your out of pocket costs are heavily reduced after your child care subsidy entitlement fee relief)**

Fee Payment Accounts are emailed one week in arrears and **PAYABLE 7 DAYS AFTER RECEIPT OF INVOICE.** *Phone payments* using Visa or Mastercard to school finance officer on 8270 1744; online BPOINT via school's website (www.flagstaff.sa.edu.au); **Bank transfer** - BSB: 065 132 Account: 10319590 Name: Flagstaff Hill OSHC. **In person at school front office:** EFTPOS (cash payments not accepted).

Excursions: **ALL CHILDREN (no exceptions) MUST ARRIVE NO LATER THAN 45 MINUTES PRIOR TO ADVERTISED DEPARTURE to allow for organisation.** Please provide extra snacks and drinks. Children need to wear **sensible closed in shoes** for walking. **No spending money allowed.** All excursion transport is on air-conditioned and seat belted Willunga Bus Charter Coaches. Risk Assessment of excursion available in OSHC room. No in-house care will be provided whilst on excursion.

Program Activities: May change without notice due to weather conditions, unavailability of performers, transport problems or educator unavailability.
CATASTROPHIC DAYS: **WE WILL BE CLOSED on days forecast as CATASTROPHIC FIRE DANGER in MT LOFTY DISTRICT - no persons are permitted on school site.**

Food and Drink: Children need to bring a piece of fruit, nutritious recess, lunch, snacks and a drink bottle every day - we will provide breakfast and an afternoon snack. No soft drinks or energy drinks! Our service follows a HEALTHY EATING POLICY and we encourage families to provide lunch and snacks accordingly. **Please ensure you pack plenty of food - children become very hungry when active!**

Food Storage: **We cannot refrigerate lunches.** Please ensure that food is packed with a cooler block to avoid food perishing on warm days, including Excursion Days. **Food from home will not be cooked/reheated for children.**

SunSmart Policy: All children are to wear a sun safe hat (brimmed, bucket or legionnaire) (cords removed) **(NO BASEBALL CAPS OR SUNVISORS ALLOWED).** SPF50+ broad spectrum sunscreen is supplied - children will apply 20 minutes before outdoor play and reapply every 2 hours. **If any health concerns (sensitivity/allergy) you are required to supply your own sunscreen (labelled and given to OSHC educator on arrival).**

Suitable Clothing: Please ensure children are dressed appropriately for weather conditions. **To protect children from harmful UV rays, clothing is to be sunsmart (no exposed shoulders).** **Parents will be contacted and requested to bring in appropriate clothing if necessary. Children are to wear closed in shoes everyday.** Please clearly label clothing items with your child's name. If your child experiences toileting accidents, please pack a full change of clothes in their bag.

Electronic Devices/Mobile Phone Policy: **Leave all personal electronic devices at home.** *Children are NOT* to bring mobile phones, smart watches, iPads, iPods, tablets or other gaming devices. Messages between parents and children can be relayed via educators at the service. If this is not observed, the devices will be put away for safekeeping by educators and returned to parents when their child is collected.

Personal Property: **CHILDREN ARE NOT TO BRING IN TOYS FROM HOME.** The OSHC educators take no responsibility for children's personal items and valuables. Any personal belongings being used inappropriately will be confiscated and returned to the parent when the child is collected.

Behaviour: If a child's behaviour is unacceptable, dangerous or disrespectful, is impacting the educators or children in attendance and they are not responding satisfactorily to measures implemented by educators, a parent or emergency contact will be contacted and required to collect them from the service. The Director reserves the right to suspend a child's access to OSHC/Holiday Care or to particular activities or excursions if their behaviour is a concern to us. We ask for your full support in this.

MEDICAL INFORMATION

DIAGNOSED HEALTH CARE and MEDICAL CONDITIONS (National Regulations 90-96). **CHILDREN CANNOT ATTEND OUR SERVICE until we have received an in date Medical Management Plan, Risk Minimisation and Communication Plan and prescribed medication.** All medication must be supplied in original packaging, have a pharmacy label that matches the information on the Medication Agreement (child's name and medication instructions clearly marked) and be in date. **Medication will not be administered without the correct documentation.** **Please contact Cathy (Director) for all enquiries.**

Other Medication: Should you require your child to be administered with any medications during the day, it is mandatory that you provide a completed **MEDICATION AGREEMENT** (form on school website or copies in OSHC). All medication (prescribed or over the counter) must be supplied in the original container with the pharmacy label and the child's name and dosage clearly marked on the container. **Please keep your children home if they are unwell.**